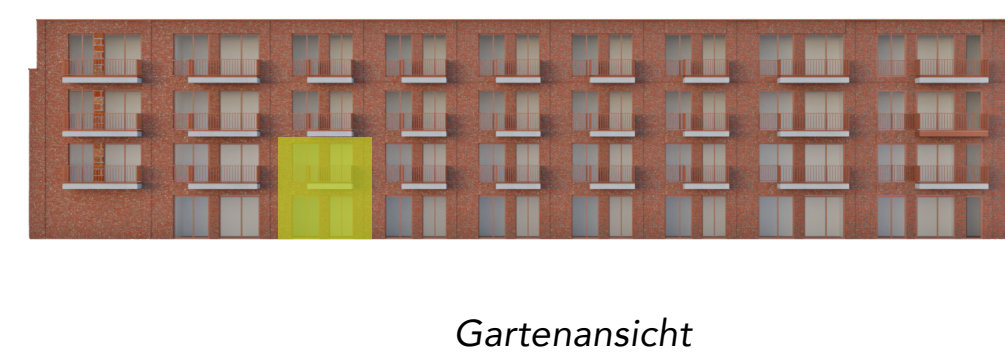
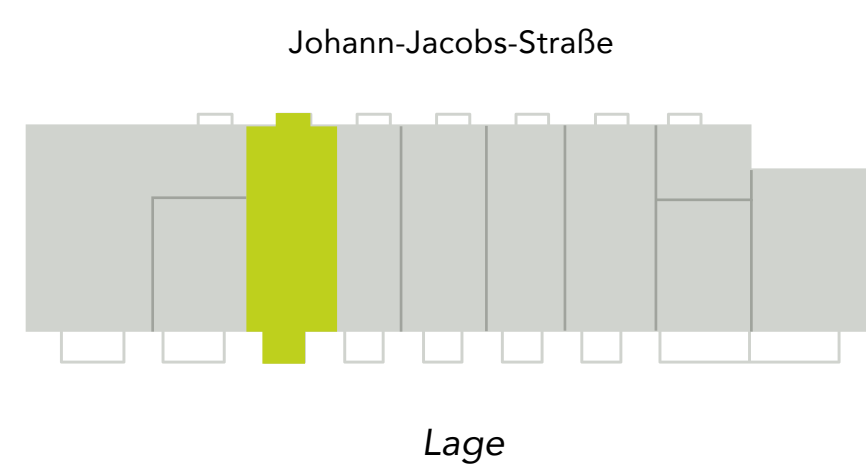




NEUES KAFFEE QUARTIER

## WHG J52



| Lage                | Erdgeschoss, 1. OG   |
|---------------------|--|
| Zimmer              | 4  |
| Windfang            | 3.9 m <sup>2</sup>   |
| Kochen              | 9.0 m <sup>2</sup>   |
| Wohnen              | 30.0 m <sup>2</sup>  |
| Flur                | 11.3 m <sup>2</sup>  |
| Abstell             | 1.4 m <sup>2</sup>   |
| WC                  | 1.7 m <sup>2</sup>   |
| HWR                 | 2.8 m <sup>2</sup>   |
| Terrasse            | Grundfläche 13.2 m <sup>2</sup><br>Grundfläche 25 % angerechnet 3.6 m <sup>2</sup> |
| Flur                | 8.7 m <sup>2</sup>   |
| Büro                | 8.5 m <sup>2</sup>   |
| Zimmer              | 13.9 m <sup>2</sup>  |
| Ankleide            | 2.4 m <sup>2</sup>   |
| Bad                 | 6.8 m <sup>2</sup>   |
| Schlafen            | 19.5 m <sup>2</sup>  |
| Balkon              | Grundfläche 5.0 m <sup>2</sup><br>Grundfläche 50 % angerechnet 2.7 m <sup>2</sup>  |
| <b>Gesamtfläche</b> | <b>126.2 m<sup>2</sup></b>   |
| <b>KAUFPREIS</b>    | <b>700.400 €</b>   |